

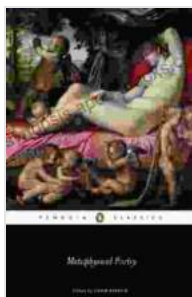
Metaphysical Poetry: A Poetic Prism on the Human Condition

An to Metaphysical Poetry

Metaphysical poetry, a literary movement that flourished in the 17th century, is renowned for its intricate wordplay, startling imagery, and exploration of profound philosophical and religious themes. The poets of this era, such as John Donne, Andrew Marvell, and George Herbert, wielded language with exceptional skill, creating works that continue to captivate and challenge readers to this day.

Metaphysical Poetry Penguin Classics Edition

The Penguin Classics edition of Metaphysical Poetry, expertly edited by Colin Burrow, presents a comprehensive collection of works from this esteemed literary tradition. Burrow, a renowned scholar in the field, provides insightful commentary and annotations that elucidate the complexities of these poems. This edition is an invaluable companion for students, scholars, and anyone seeking a deeper understanding of Metaphysical poetry.



Metaphysical Poetry (Penguin Classics) by Colin Burrow

★ ★ ★ ★ ☆ 4.7 out of 5
Language : English
File size : 737 KB
Text-to-Speech : Enabled
Screen Reader : Supported
Enhanced typesetting : Enabled
Print length : 395 pages



Themes Explored in Metaphysical Poetry

Metaphysical poetry spans a wide range of themes, reflecting the multifaceted nature of the human experience. Love and loss are prevalent subjects, with poets delving into the complexities of romantic relationships, heartbreak, and the enduring power of love. Religious themes are also intertwined, as many poets explored the relationship between humanity and the divine. Moreover, Metaphysical poetry often grapples with existential questions, examining the nature of life, death, and the search for meaning.

Exploring Metaphysical Poetry: A Detailed Analysis

To fully appreciate the artistry of Metaphysical poetry, let us delve into detailed analyses of some of its representative works:

1. John Donne's "The Flea"

Characterized by its witty conceit and playful use of imagery, "The Flea" explores the idea of love as a transformative force that can unite two people. The speaker argues that since he and his beloved have shared the blood of the flea, they have become one. Donne's use of paradox and extended metaphor demonstrates the intricate wordplay that defines Metaphysical poetry.

2. Andrew Marvell's "To His Coy Mistress"

Marvell's poem is a passionate plea to a hesitant lover, urging her to seize the moment and embrace the pleasures of physical love. Employing vivid

imagery and an urgent tone, Marvell explores the fleeting nature of time and the importance of living life to the fullest.

3. George Herbert's "Love (III)"

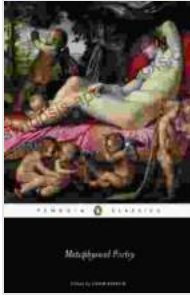
Herbert's poem is a religious meditation on the nature of divine love. The speaker compares his love for God to a variety of earthly experiences, expressing the profound and transformative power of spiritual connection. Herbert's use of metaphor and symbolism conveys the inexpressible depths of his devotion.

The Enduring Legacy of Metaphysical Poetry

Metaphysical poetry continues to be celebrated for its intellectual rigor, emotional depth, and enduring relevance. The poets of this movement crafted works that transcend time, exploring universal human experiences in a manner both profound and inventive. The Penguin Classics edition edited by Colin Burrow provides an exceptional platform to rediscover the brilliance of Metaphysical poetry and engage with its profound insights into the human condition.

Metaphysical Poetry Penguin Classics Edition is an essential resource for anyone interested in exploring the depths of this literary movement. Edited by the esteemed scholar Colin Burrow, this edition provides a comprehensive collection of works, accompanied by insightful commentary that illuminates their complexities. Whether you are a seasoned scholar or a curious reader, this volume offers a captivating journey into the world of Metaphysical poetry, where love, loss, and the human condition are examined with profound insight and unparalleled artistry.

Metaphysical Poetry (Penguin Classics) by Colin Burrow



★★★★☆ 4.7 out of 5
Language : English
File size : 737 KB
Text-to-Speech : Enabled
Screen Reader : Supported
Enhanced typesetting: Enabled
Print length : 395 pages



Kids Rule Box Office Hits for the Elementary Player

Empowering Young Performers: A Journey of Creativity and Confidence
Are you ready to unleash the star power within your elementary students? With "Kids...



Unraveling the Enigma: Political Alienation and Its Impact on Political Behavior

In the labyrinthine tapestry of human existence, political alienation stands as a formidable force, casting a long shadow over the intricate interplay between individuals and...