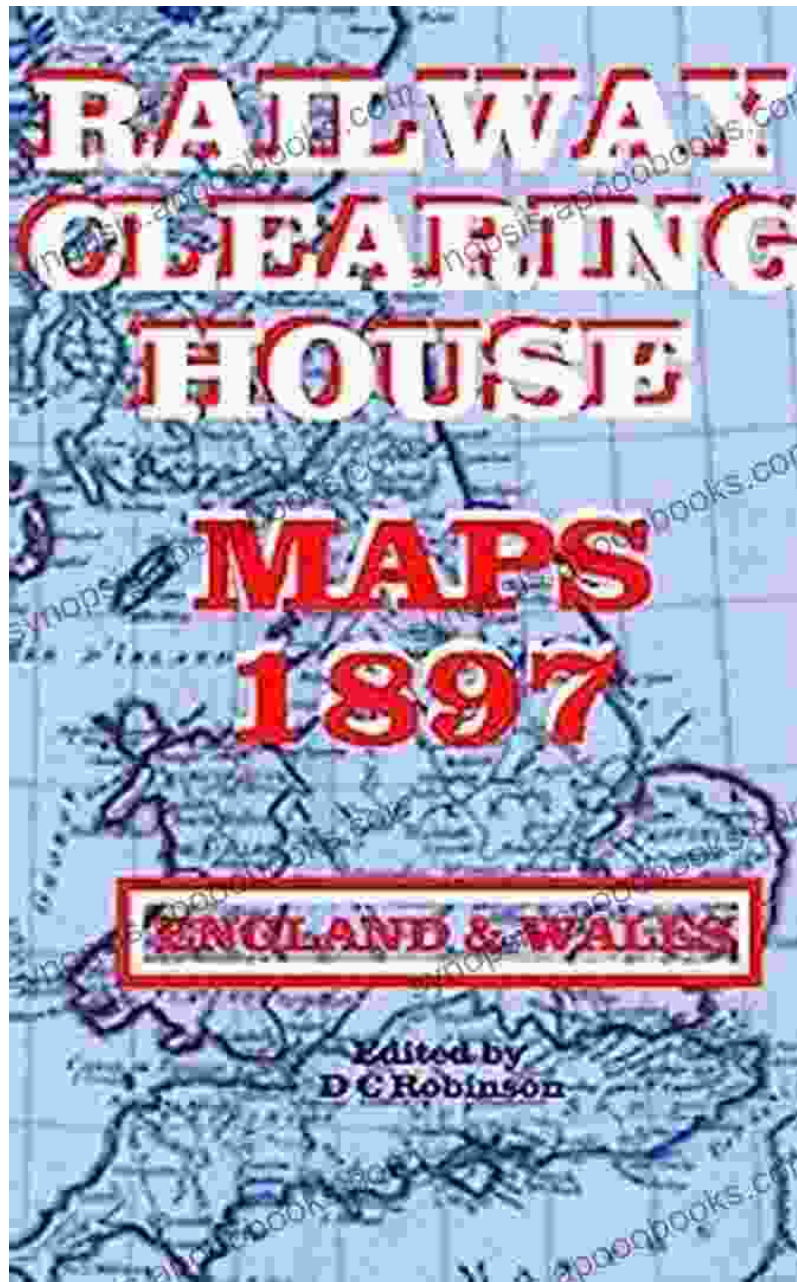
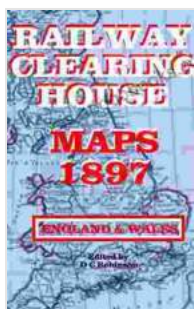


Railway Clearing House Maps 1897: An In-Depth Exploration of England and Wales' Victorian Rail Network

: A Glimpse into the Past



Step back in time to the golden age of rail travel and immerse yourself in the intricate tapestry of England and Wales' railway network, as captured in the remarkable Railway Clearing House (RCH) Maps of 1897. These meticulously crafted maps provide an unparalleled glimpse into the Victorian-era transportation system that transformed the landscape and connected the nation.



RAILWAY CLEARING HOUSE MAPS 1897: ENGLAND AND WALES

by D C Robinson

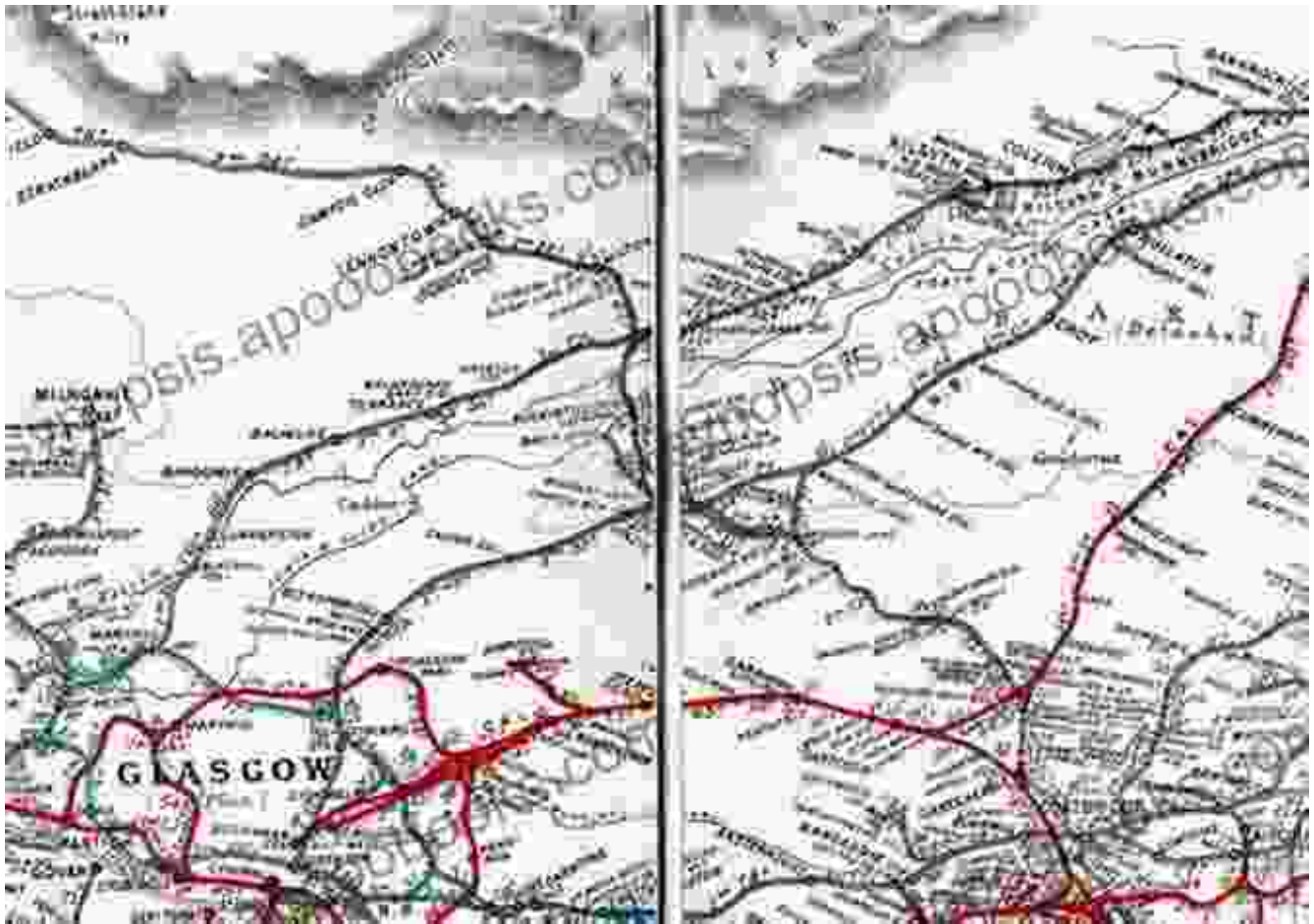
★★★★★ 5 out of 5

Language	: English
File size	: 10593 KB
Text-to-Speech	: Enabled
Screen Reader	: Supported
Enhanced typesetting	: Enabled
Print length	: 49 pages
Paperback	: 106 pages
Item Weight	: 4.2 ounces
Dimensions	: 5.25 x 0.24 x 8 inches



The RCH Maps were commissioned by the Railway Clearing House, an organization established in 1842 to facilitate cooperation and uniformity among the numerous railway companies operating in England and Wales. The maps were intended to provide a comprehensive and accurate representation of the country's vast railway network, aiding in the planning, operation, and management of rail services.

Unveiling the Maps: A Masterpiece of Cartography



The RCH Maps are a testament to the exceptional cartographic skills of their creators. Each map is a work of art, meticulously drawn and colored by hand, using a range of techniques and symbols to depict the complex railway network with astonishing precision.

The maps feature a wealth of detail, including railway lines, stations, junctions, tunnels, viaducts, canals, rivers, and even cities and towns. The use of color coding allows for easy identification of different railway companies, making the maps both aesthetically pleasing and highly informative.

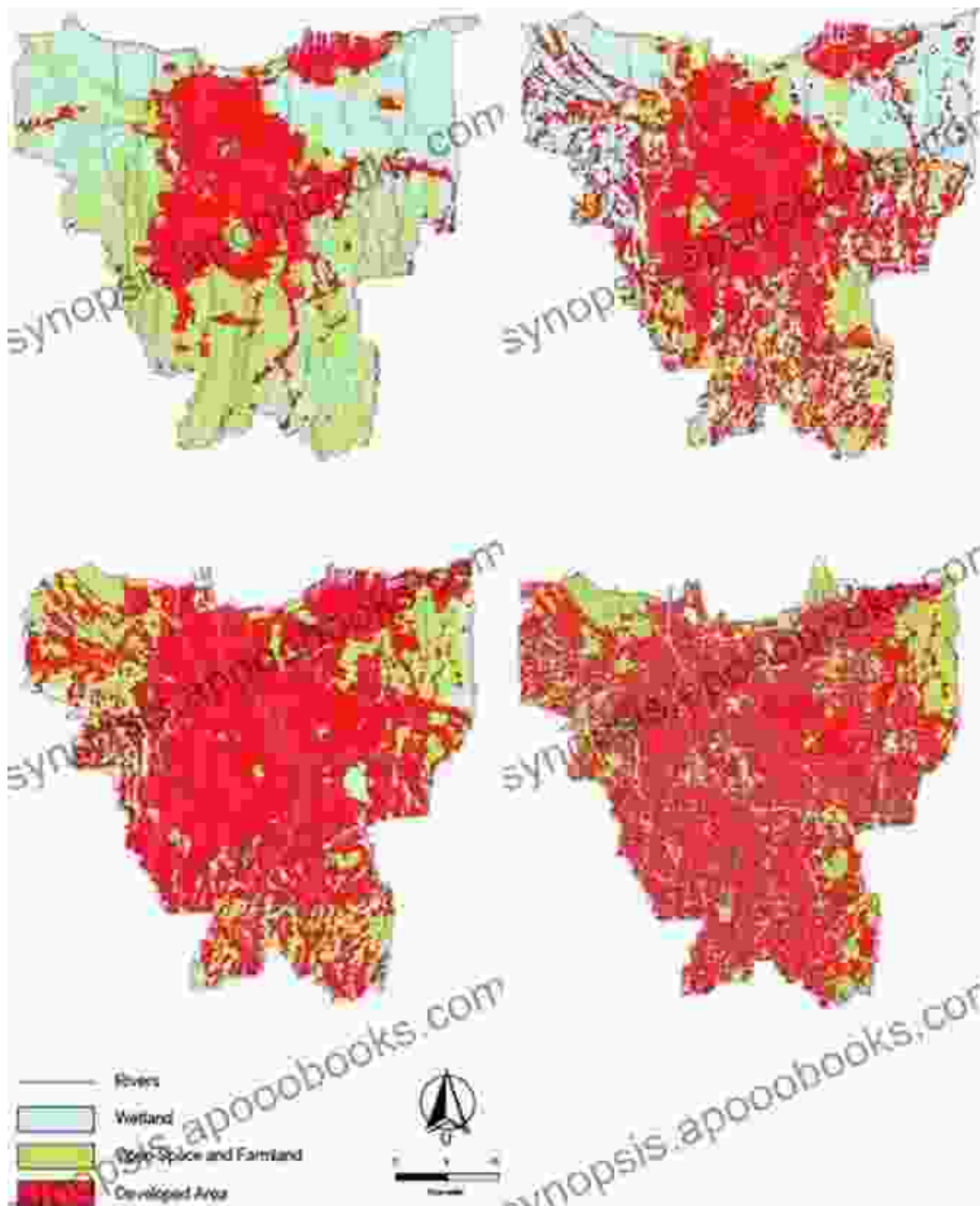
Exploring the Victorian Railway Network



The RCH Maps reveal the extent and complexity of the Victorian railway network in England and Wales. By 1897, the country boasted over 20,000 miles of track, connecting every major city and countless smaller towns and villages.

The maps highlight the key railway lines that formed the backbone of the network, such as the Great Western Railway, the London and North Western Railway, and the Midland Railway. These lines carried passengers and freight across the country, facilitating trade, travel, and communication.

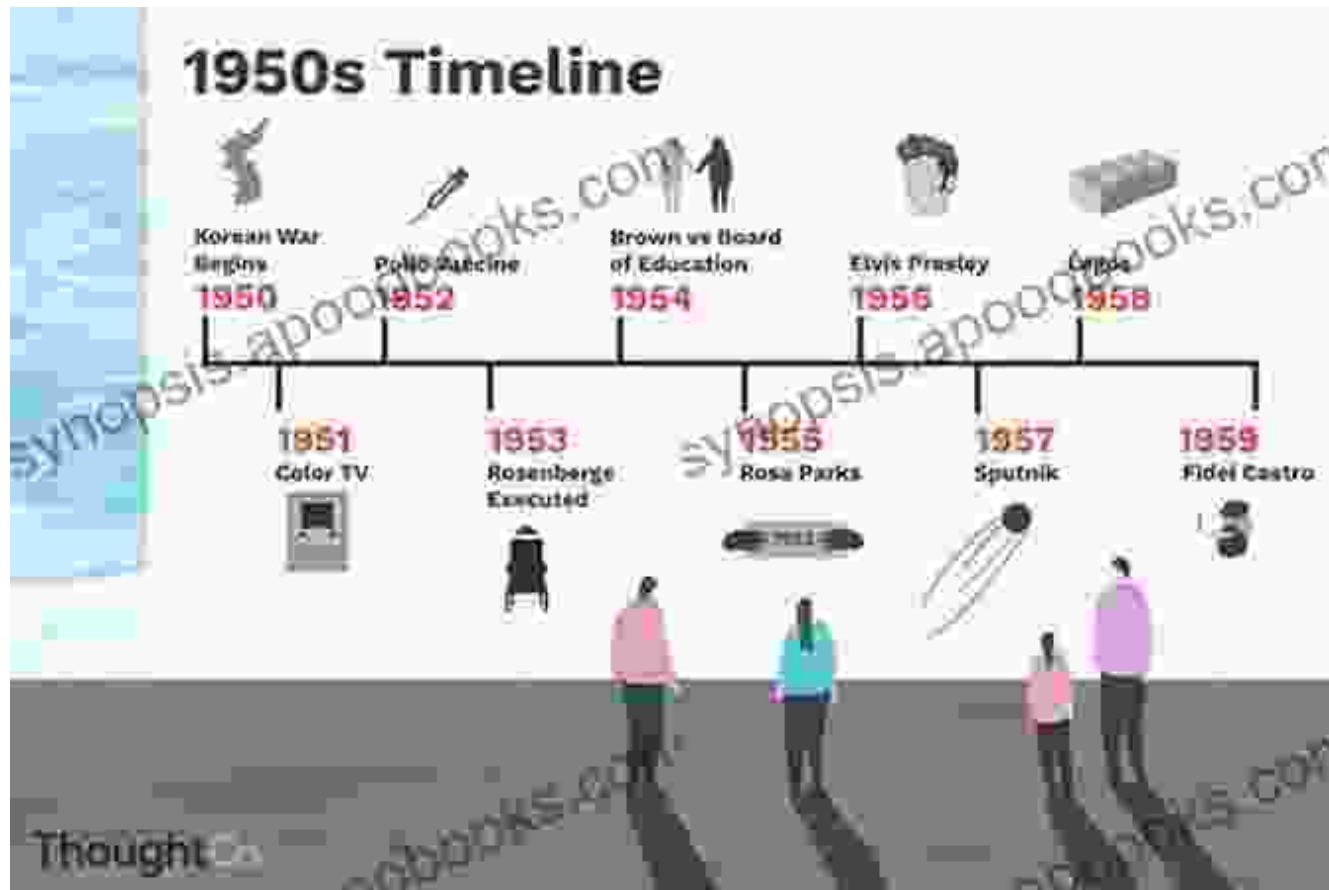
The Impact of Railways: A Catalyst for Transformation



The development of the railway network had a profound impact on Victorian society. Railways revolutionized transportation, making it faster, more reliable, and more accessible than ever before. This led to increased mobility, urbanization, and economic growth.

The maps reveal how railways became the lifeblood of industry, connecting factories, mines, and ports, and facilitating the movement of goods and raw materials. They also played a crucial role in the growth of tourism, allowing people to explore the country and its attractions with ease.

Stories from the Tracks: Uncovering Hidden Histories



Beyond their practical value, the RCH Maps also provide a fascinating glimpse into the social and cultural history of England and Wales. They mark the sites of significant historical events, such as railway accidents, station openings, and royal visits.

The maps invite us to explore the stories behind the lines and stations, uncovering the lives of railway workers, passengers, and the communities

that grew up around the railways. They offer a tangible connection to the past, allowing us to appreciate the ingenuity, determination, and impact of the Victorian railway pioneers.

Preserving a Legacy: The Enduring Value of the RCH Maps



The Railway Clearing House Maps of 1897 are not merely historical documents; they are a priceless heritage that continues to fascinate and inspire. Their detailed and accurate depiction of the Victorian railway network provides invaluable insights into the development of transportation and the transformation of England and Wales.

Today, these maps are carefully preserved in archives and libraries, ensuring their accessibility for future generations. They serve as a reminder

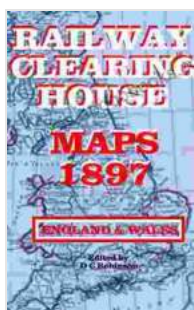
of the ingenuity and vision that shaped the railway network and continue to inspire researchers, historians, and railway enthusiasts alike.

: A Timeless Treasure

The Railway Clearing House Maps of 1897 stand as a testament to the enduring power of cartography and the transformative impact of railways. Through their intricate lines and vibrant colors, these maps captivate us with their historical significance and aesthetic beauty.

Whether you're a railway enthusiast, a history buff, or simply someone who appreciates the beauty of maps, the RCH Maps offer a captivating journey into the past. They invite us to explore the intricate web of England and Wales' Victorian railway network, uncovering the stories and secrets that lie hidden within its lines.

So embark on this immersive cartographic adventure and let the Railway Clearing House Maps of 1897 transport you to a bygone era of steam engines, iron rails, and boundless possibilities.



RAILWAY CLEARING HOUSE MAPS 1897: ENGLAND AND WALES by D C Robinson

★★★★★ 5 out of 5

Language	: English
File size	: 10593 KB
Text-to-Speech	: Enabled
Screen Reader	: Supported
Enhanced typesetting	: Enabled
Print length	: 49 pages
Paperback	: 106 pages
Item Weight	: 4.2 ounces
Dimensions	: 5.25 x 0.24 x 8 inches

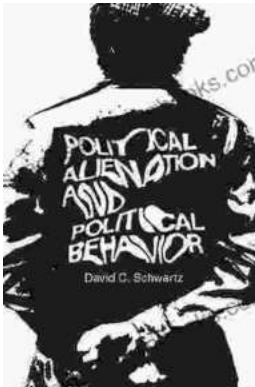
FREE

DOWNLOAD E-BOOK



Kids Rule Box Office Hits for the Elementary Player

Empowering Young Performers: A Journey of Creativity and Confidence
Are you ready to unleash the star power within your elementary students? With "Kids...



Unraveling the Enigma: Political Alienation and Its Impact on Political Behavior

In the labyrinthine tapestry of human existence, political alienation stands as a formidable force, casting a long shadow over the intricate interplay between individuals and...